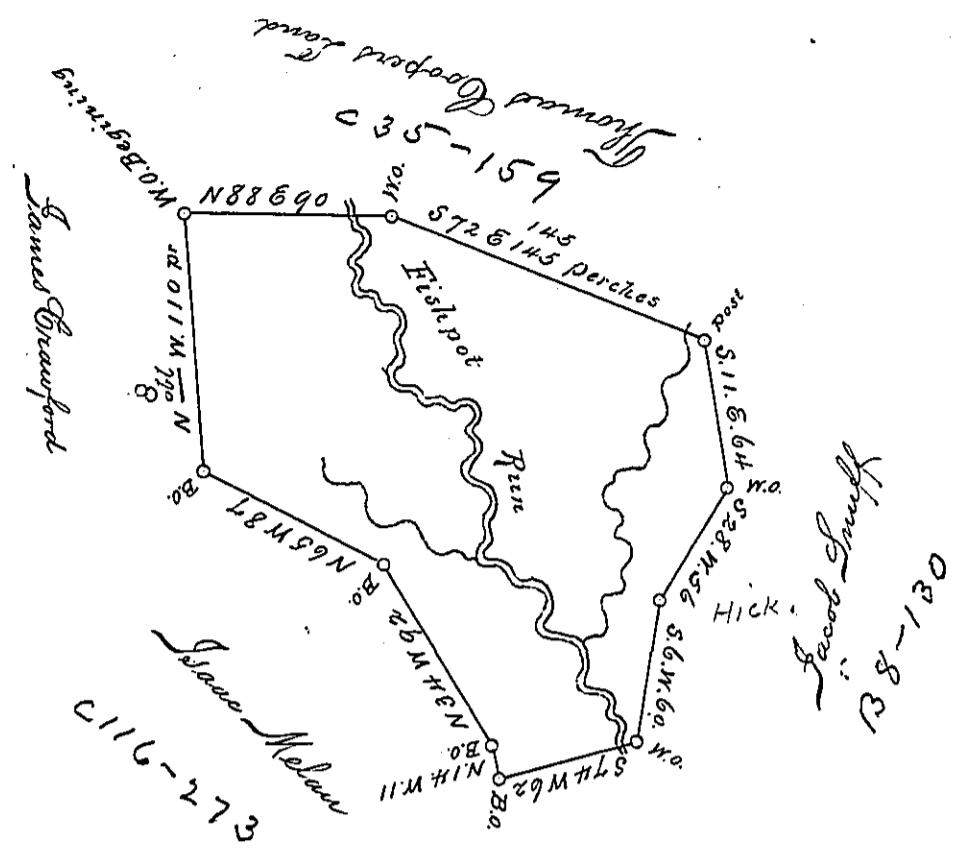


Wash. Co.
East Beth. Tp.



The above is a Draught of a Tract of Land Situate
 on the Fisopot Rive in Washington County called
 Bishopsflats Containing 218 ³/₄ Acres of Land
 Strict measure Surveyed

In pursuance of a Certificate granted to Thomas
 Bishop by the Commissioners of the State of
 Virginia, the same being Recorded in the List
 of Authenticated Rights. Ent^d 13th Apl 1780
 David Redick D.S.

John Lukens Esq. S. G.

see Mr Hoges letter T 2

IN TESTIMONY that the above is a copy of the original remaining on file in the
 Department of Internal Affairs of Pennsylvania, made con-
 formably to an Act of Assembly approved the 16th day of
 February, 1833. I have hereunto set my Hand and caused
 the Seal of said Department to be affixed at Harrisburg, this

Second day of June 1896

James Watta
 Secretary of Internal Affairs.